

Ecological Organization



Species



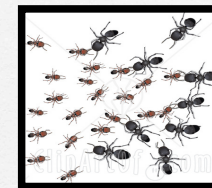
Species:

- a unique organism with specific characteristics
- members of a species can mate with each other and produce fertile offspring.

Examples:

tiger human maple tree
orange mushroom

Population



Population

- a group of members of the same species that live in the same area.

Examples:

humans in ants in a hole
KW
bees in a hive maple trees in a forest



Community



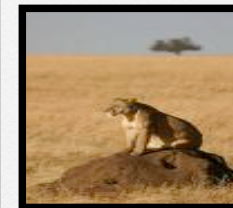
Community

- made up of populations of different species that live and interact in an area.

Examples:

different fish, frogs, bacteria, algae, ducks, lilies in a pond

Ecosystem

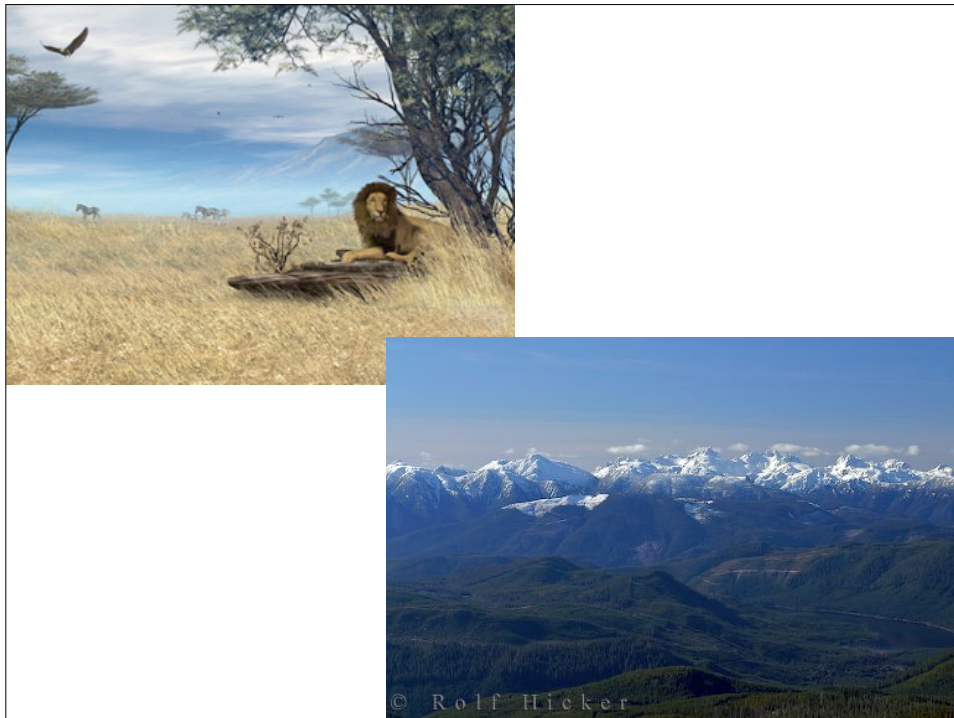


Ecosystem

- the interaction of the community with the local abiotic factors.

Examples:

forest, lake, pond, desert, swamp



© Rolf Hicker

Biome



Biome

- Large geographical region that contains similar ecosystems due to a distinct climate and similar biotic and abiotic factors.

rainforest, grasslands, desert,
tropic, marine, freshwater, antartica,
temperate

Biosphere



Biosphere

- part of our planet where life exists
- includes water, land and air
- all the biomes combine to form the biosphere.

The three components of our biosphere are???

Lithosphere

Atmosphere

Hydrosphere

