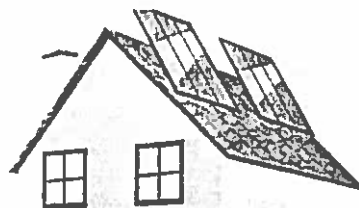




SNC1DI



# Renewable Energy Project

Due Date: Thursday,

The Scenario: You are a group of environmental advisors for the city of Kitchener. Kitchener would like to supplement its traditional energy sources (hydroelectric and nuclear) for a renewable energy source. In groups of 3 you will choose a renewable energy source for the city and present about it to the mayor (Mr. McC).

McC is very particular about the information that he needs in order to make a decision on such an important matter.

Your presentation must include:

## Member 1:

- Title card
- Name and describe the source of energy (Use pictures)
- How the energy source works/ How electrical energy is produced
  - Use schematic diagrams and give a detailed explanation
- The local availability of the source (How can this source be used here)
- Potential site for production (Use a map)

## Member 2:

- Environmental implications (Does it damage the environment during construction or after?)
- Emissions to the environment (Are there pollution problems? Explain)
- Waste products (Are there disposable wastes associated with the source?)
- Advantages and disadvantage of using this energy source

## Member 3:

- Economic and Monetary cost (Is it expensive to set up? Is it expensive to operate?)
- Energy potential (Does it have the potential to supply large quantities of energy?)
- Social implications (How will the people of Kitchener feel about this energy source?)
- Overall recommendation (Why should Mr. Mayor choose your source?)

## Overall Requirements:

- Between 6-8 minutes long (Cut-off at 8 minutes)
- Bright colourful and easy to read slides
- Separate reference page at the end
- **Everything needs to be put into your own words.**

Teacher: Mr. McCloskey

Course: Science Academic Grade 9

---

**Renewable Energy Project**


---

Expectations: E1, E1.2

Criteria	Level 4 (80% - 100%)	Level 3 (70% - 79%)	Level 2 (60% - 69%)	Level 1 (50% - 59%)	Mark
<b>Communication</b>					
Communication of information (good writing, presentation materials)	Communicates information and ideas clearly and precisely	Communicates information and ideas with considerable clarity and precision	Communicates information and ideas with some clarity and precision	Communicates information and ideas with limited clarity and precision	
<b>Knowledge and Understanding</b>					
Explain information gathered through research	Explanation of information is based on thorough research	Explanation of information is based on considerable research	Explanation of information is based on some research	Explanation of information is based on limited research	
<b>Inquiry</b>					
Analysis of social, economic, and environmental issues involving your energy source	Demonstrates a high degree of understanding when analyzing social and economic issues involving renewable energy source	Demonstrates considerable understanding when analyzing social and economic issues involving renewable energy source	Demonstrates some understanding when analyzing social and economic issues involving renewable energy source	Demonstrates little understanding when analyzing social and economic issues involving renewable energy source	
<b>Making Connections</b>					
Analysis of social and economic issues involving the RISKS and BENEFITS of the energy source	Analyzes complex social and economic issues with a high degree of understanding	Demonstrates considerable depth of understanding when analyzing social and economic issues (uses own works and expresses original ideas)	Demonstrates some depth of understanding when analyzing social and economic issues (adopts and/or extends others' works and ideas)	Demonstrates little depth of understanding when analyzing social and economic issues (lists others' ideas)	

Overall Mark:

LVL